

FlexAPI Reference

For 3rd Party Platform (TCP Version)

Revision History

| Revision | Date | Author | Item(s) changed | Note |
|----------|------------|--------|---------------------|------|
| 1.0.0 | 14/12/2020 | wangzy | Create document. | |
| 1.0.1 | 01/04/2021 | wangzy | Add CRC16 checksum. | |
| 1.0.2 | 27/1/2021 | wangzy | Added 1-wire group | |

1. Introduction

We introduced FlexAPI for the fast evolving IoT applications, which highly value easy integration, openness, flexibility, extensibility and programmability.

FlexAPI is designed to be efficient, clean and ready to use. It's network oriented and programming language independent, and is ideal for cloud platform integration.

FlexAPI provides unified data and control services via TCP connection for 3rd party platforms. Our device acts as a TCP client to access the third-party platform server.

For data service, each topic corresponds to a group of data, and we have ready to use reserved groups such as: GNSS, OBD, Motion, IO and Summary.

Note that the Summary group is the all in one data group which includes all the data from our reserved OBD, GNSS, Motion and IO groups.

In general, reserved groups are enough for user's need.

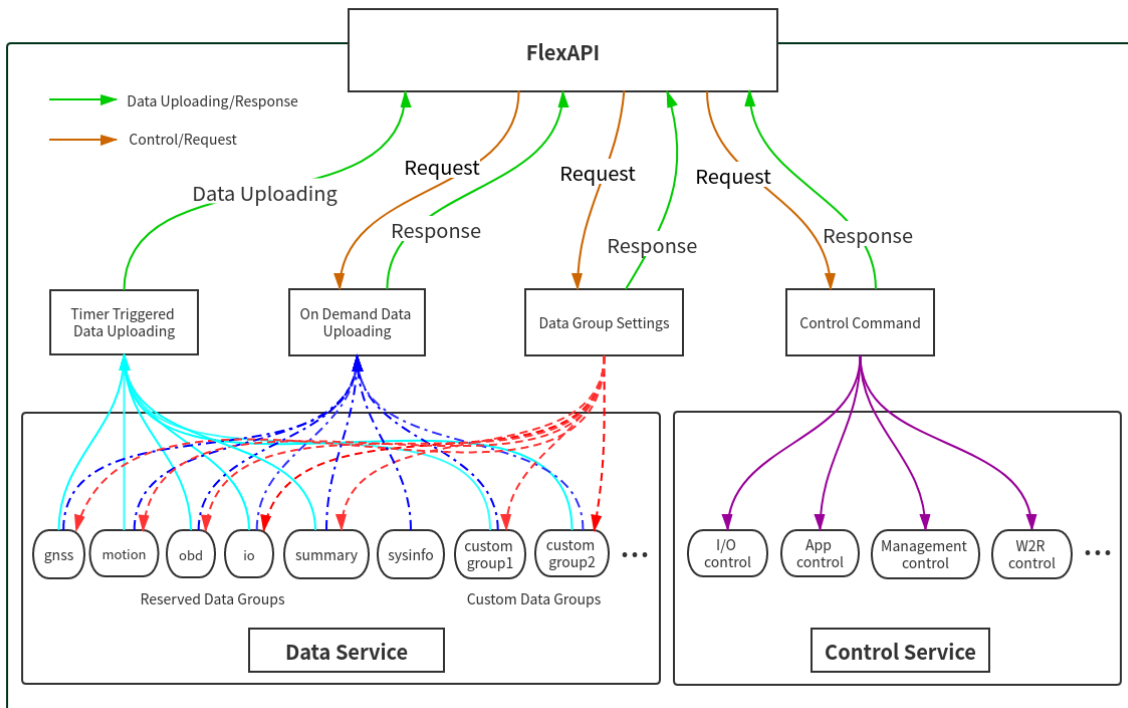
Users can send different request to get data for the topic, and they can also set the data uploading intervals.

FlexAPI also provides topics for users to apply control, such as turn on/off the digital output.

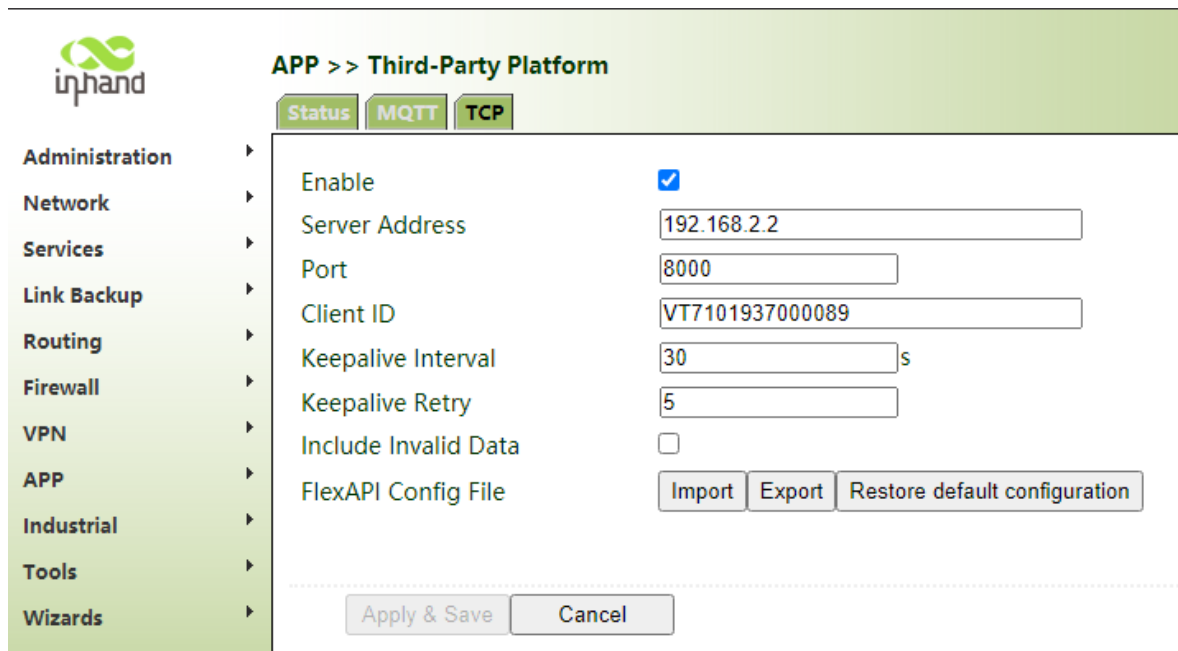
FlexAPI specially provides topics for users to actively get data on demand.

For advanced users, they can even define their interested groups and set their uploading intervals.

1.1 Architecture



1.2 TCP Settings



- **Enable:** Turn on or off the TCP connection for third-party platform.
- **Server Address:** IP addresses of TCP server for third-party platform.
- **Port :** Port of TCP server for third-party platform.
- **Client ID:** The ID of the TCP client that connects to a third-party platform, the default Client ID is the device serial number.

Note: The Client ID is the unique ID used to identify the device. The server can use this ID to determine which device to send the request to.

- **Keepalive Interval:** The keepalive interval of TCP connection.
- **Keepalive Retry:** The number of TCP connection keepalive retries.

- **Include Invalid Data:** if enabled, FlexAPI will also return invalid data items with `null` value besides valid data items.
- **FlexAPI Config File:** Mangle FlexAPI configuration file of FlexAPI-TCP.

1.3 TCP Packet Structure

| | | | | |
|--------------------|--------------|-------------------------------|-------|--------------------------|
| Data | \$ (0x24) | {... .."key": "value"} | | <CR> <LF> (0x0D 0x0A) |
| Section | Head | JSON Data | CRC16 | End |
| Size(Bytes) | 1 | | 2 | 2 |

- **Head:** The start character of packet.
- **JSON Data:** The message in JSON format in packet.
- **CRC16:** Checksum, Only the JSON data part is calculated. CRC parameter: POLY: 0x8005 ($x^{16} + x^{15} + x^2 + 1$), INIT: 0x0000, XOROUT: 0x0000.
- **End:** The end sequence of packet.

1.4 TCP Packet Examples

The original packet:

```

24 7B 22 74 6F 70 69 63 22 3A 20 22 76 31 2F 56 54 37 31 30 31 39 33 37 30 30
30 30 38 39 2F 75 73 65 72 64 61 74 61 2F 69 6E 66 6F 22 2C 20 22 70 61 79 6C
6F 61 64 22 3A 20 7B 22 75 73 65 72 64 61 74 61 2E 73 65 72 69 61 6C 5F 6E 75
6D 62 65 72 22 3A 20 22 56 47 37 31 30 22 2C 20 22 75 73 65 72 64 61 74 61 2E
63 75 73 74 6F 6D 5F 6B 65 79 22 3A 20 22 63 75 73 74 6F 6D 5F 76 61 6C 75 65
22 7D 7D 71 E4 0D 0A

```

- **24** : The head of the packet.
- **7B 22 7D 7D**: The JSON message is :

```

1 {"topic": "v1/VT7101937000089/userdata/info", "payload":
  {"userdata.serial_number": "VG710", "userdata.custom_key":
   "custom_value"}}

```

- **71 E4** : The CRC of the JSON message.
- **0D 0A** : The end sequence of packet.

2 FlexAPI Overview

FlexAPI organizes data as groups and provides ready to use reserved groups for users to develop their applications.

FlexAPI allow users to change reserved and custom group settings.

Users can get timer triggered group data periodically. Besides, FlexAPI also allow users to actively get group data on demand.

For user initiated service requests we employ a request & response scheme.

Request & response scheme means users need to include topics in the requests they send, and get the data through different topics.

This overview part gives summary on: FlexAPI general information, error codes and supported topics.

For Basic Usage, see [3. Basic usage](#).

For Advanced Usage, see [4. Advanced usage](#).

For FlexAPI supported Parameters, see [Appendix A. FlexAPI supported Parameters](#).

2.1 FlexAPI Return information and Errors

2.1.1 General information

| Parameter Name | Description | Type | Note |
|----------------|-------------------|------------|--|
| Request | Server-->Client | Operations | A request sent by third-party platform server to client device. |
| Response | Client-->Server | Operations | A response sent by client device to third-party platform server. |
| topic | topic | string | Each TCP message contains a topic, and the device returns different payload based on that topic. |
| payload | payload | object | message content. |
| result | result | object | When the request succeeds, there will be result field in response message body. API callers should check the content of the result field to determine whether the request has been successfully processed. |
| error | error code | string | When the request fails, it is added to the response message body. For more information, see General Error Codes |
| error_desc | error description | string | When the request fails, it is added to the response message body. For more information, see General Error Codes |
| ts | time stamp | number | UNIX timestamp since Epoch. Indicates when the message was transmitted by device. |

2.1.2 General Error Codes

| Error Code | Description | Error Handling |
|-------------------|-----------------------|--|
| invalid_parameter | invalid parameter | check request parameter |
| not_found | resource not exist | make sure related service is enabled and running |
| device_busy | device busy | retry request |
| device_error | device internal error | retry request |
| data_invalid | resource invalid | retry request |

2.2 FlexAPI supported Topics

2.2.1 Data service

2.2.1.1 Timer triggered reserved group data get

The server can receive messages with the following topics to get the latest data.

| Topic | Allowed Operations | Description |
|-------------------------------|--------------------|---|
| v1/{client_id}/summary/info | Receive | Timer triggered Summary data uploading. see Summary Data . |
| v1/{client_id}/obd/info | Receive | Timer triggered OBD data uploading. See OBD data . |
| v1/{client_id}/gnss/info | Receive | Timer triggered GNSS data uploading. see GNSS Data . |
| v1/{client_id}/motion/info | Receive | Timer triggered Motion data uploading. see Motion Data . |
| v1/{client_id}/io/info | Receive | Timer triggered IO data uploading. see IO Data . |
| v1/{client_id}/cellular1/info | Receive | Timer triggered Cellular1 data uploading. see Cellular1 Data . |
| v1/{client_id}/userdata/info | Receive | Timer triggered User data uploading. see User Data . |
| v1/{client_id}/1-wire/info | Receive | Timer triggered 1-wire data uploading. see 1-wire Data . |

2.2.1.2 Reserved group settings

The server can send a messages with the following topics to set the data uploading intervals and define their interested data.

| Topic | Allowed Operations | Description |
|-----------------------------------|--------------------|---|
| v1/{client_id}/summary/set | Request | Set Summary group request. see Summary settings . |
| v1/{client_id}/summary/set/resp | Response | Set Summary group response. |
| v1/{client_id}/obd/set | Request | Set OBD group request. see OBD settings . |
| v1/{client_id}/obd/set/resp | Response | Set OBD group response. |
| v1/{client_id}/gnss/set | Request | Set GNSS group request. see GNSS settings . |
| v1/{client_id}/gnss/set/resp | Response | Set GNSS group response. |
| v1/{client_id}/motion/set | Request | Set Motion group request. see Motion settings . |
| v1/{client_id}/motion/set/resp | Response | Set Motion group response. |
| v1/{client_id}/io/set | Request | Set IO group request. see IO settings . |
| v1/{client_id}/io/set/resp | Response | Set IO group response. |
| v1/{client_id}/cellular1/set | Request | Set Cellular1 group request. see Cellular1 settings . |
| v1/{client_id}/cellular1/set/resp | Response | Set Cellular1 group response. |
| v1/{client_id}/userdata/set | Request | Set User data group request. see User data settings . |
| v1/{client_id}/userdata/set/resp | Response | Set User data group response. |
| v1/{client_id}/1-wire/set | Request | Set 1-wire group request. see 1-wire settings . |
| v1/{client_id}/1-wire/set/resp | Response | Set 1-wire group response. |

2.2.1.3 On demand reserved group data get

The server can send a messages with the following topics to actively get data on demand.

| Topic | Allowed Operations | Description |
|-------|--------------------|-------------|
|-------|--------------------|-------------|

| Topic | Allowed Operations | Description |
|---------------------------------------|--------------------|---|
| v1/{client_id}/summary/refresh | Request | Refresh Summary data request. see Summary Data . |
| v1/{client_id}/summary/refresh/resp | Response | Refresh Summary data response. |
| v1/{client_id}/obd/refresh | Request | Refresh OBD data request. see OBD data . |
| v1/{client_id}/obd/refresh/resp | Response | Refresh OBD data response. |
| v1/{client_id}/gnss/refresh | Request | Refresh GNSS data request. see GNSS Data . |
| v1/{client_id}/gnss/refresh/resp | Response | Refresh GNSS data response. |
| v1/{client_id}/motion/refresh | Request | Refresh Motion data request. see Motion Data . |
| v1/{client_id}/motion/refresh/resp | Response | Refresh Motion data response. |
| v1/{client_id}/io/refresh | Request | Refresh IO data request. see IO Data . |
| v1/{client_id}/io/refresh/resp | Response | Refresh IO data response. |
| v1/{client_id}/cellular1/refresh | Request | Refresh Cellular1 data request. see Cellular1 Data . |
| v1/{client_id}/cellular1/refresh/resp | Response | Refresh Cellular1 data response. |
| v1/{client_id}/sysinfo/refresh | Request | Refresh system info request. see System Info . |
| v1/{client_id}/sysinfo/refresh/resp | Response | Refresh system info response. |
| v1/{client_id}/userdata/refresh | Request | Refresh User data request. see User data . |
| v1/{client_id}/userdata/refresh/resp | Response | Refresh user data info response. |
| v1/{client_id}/1-wire/refresh | Request | Refresh 1-wire data request. see 1-wire data . |
| v1/{client_id}/1-wire/refresh/resp | Response | Refresh 1-wire data info response. |

2.2.2 Control Service

2.2.2.1 IO control

The server can send a messages with the following topics to turn on/off the digital output.

| Topic | Allowed Operations | Description |
|--------------------------------|--------------------|---|
| v1/{client_id}/io/control | Request | IO control request. see IO Control . |
| v1/{client_id}/io/control/resp | Response | IO control response. |

2.2.3 Advanced usage

Advanced users can use the following topics to define their interested groups and set their uploading intervals.

2.2.3.1 Custom group settings

2.2.3.1.1 Create/Update custom group

| Topic | Allowed Operations | Description |
|-------------------------------|--------------------|--|
| v1/{client_id}/group/set | Request | Create/Update group request. see Create/Update custom group . |
| v1/{client_id}/group/set/resp | Response | Create/Update group response. |

2.2.3.1.2 Get custom group settings

| Topic | Allowed Operations | Description |
|-------------------------------|--------------------|--|
| v1/{client_id}/group/get | Request | Get group settings request. see Get custom group settings . |
| v1/{client_id}/group/get/resp | Response | Get group settings response. |

2.2.3.1.3 Remove custom group

| Topic | Allowed Operations | Description |
|-------------------------------|--------------------|--|
| v1/{client_id}/group/set | Request | Remove group request. see Remove custom group . |
| v1/{client_id}/group/set/resp | Response | Remove group response. |

2.2.3.2 Timer triggered custom group data get

| Topic | Allowed Operations | Description |
|----------------------------------|--------------------|---|
| v1/{client_id}/{group_name}/info | Response | Timer triggered custom group data uploading. see Timer triggered custom group data get . |

2.2.3.3 On demand custom group data get

| Topic | Allowed Operations | Description |
|--|--------------------|--|
| v1/{client_id}/{group_name}/refresh | Request | Refresh group data request. see On demand custom group data get . |
| v1/{client_id}/{group_name}/refresh/resp | Response | Refresh group data response. |

2.3 FlexAPI Limits

| Resource | Limit |
|--|--|
| Minimum retry interval of <code>settings</code> , <code>refresh</code> , <code>get</code> requests | 1 s |
| Minimum retry interval of <code>io control</code> request | 5 s |
| <code>client_id</code> size | up to 128 bytes of <code>UTF-8</code> encoded characters |
| <code>client_token</code> size | up to 256 bytes of arbitrary string |
| Available custom groups | up to 16 |
| Maximum data items per group | 256 |

3. Basic usage

3.1 Timer triggered reserved group data get

3.1.1 Summary data

Once you have sent the settings message to client, you will periodically receive the related data.

Received Message :

```
1  {
2    "topic": "v1/{client_id}/summary/info",
3    "payload": {
4      "gnss.ts" : 1592820539,
5      "gnss.latitude": 40.232213,
6      "gnss.longitude": 116.34366,
7      "gnss.altitude": 346.0,
8      "gnss.speed": 87.6,
9      "gnss.heading": 234.0,
10     "gnss.hdop": 1.2,
11     "gnss.pdop": 2.1,
12     "gnss.hacc": 1.0,
13     "gnss.fix": 3,
14     "gnss.num_sv": 7,
15     "gnss.date": "2020-4-17",
16     "gnss.time": "10:16:21",
17     "obd.ts" : 1592820539,
18     "obd.rpm" : 1234,
19     "obd.speed" : 20,
20     "obd.odo": 1400,
21     "obd.up_time": 3600,
22     "io.ts" : 1592820539,
23     "io.AI1": 0.0,
24     "io.AI2": 0.0,
25     "io.AI3": 0.0,
26     "io.AI4": 0.0,
27     "io.AI5": 0.0,
28     "io.AI6": 0.0,
29     "io.DI1": 0,
30     "io.DI1_pullup": 0,
31     "io.DI2": 0,
32     "io.DI2_pullup": 0,
33     "io.DI3": 0,
34     "io.DI3_pullup": 0,
35     "io.DI4": 0,
36     "io.DI4_pullup": 0,
37     "io.DI5": 0,
38     "io.DI5_pullup": 0,
39     "io.DI6": 0,
40     "io.DI6_pullup": 0,
41     "io.D01": 0,
42     "io.D01_pullup": 0,
43     "io.D02": 0,
44     "io.D02_pullup": 0,
45     "io.D03": 0,
46     "io.D03_pullup": 0,
```

```
47     "io.D04": 0,  
48     "io.D04_pullup": 0  
49   }  
50 }
```

Parameter description, See [General Information](#) & [FlexAPI supported Parameters](#).

Use [Summary settings](#) to modify group setting(`interval` & `interest`).

3.1.2 OBD data

Once you have sent the settings message to client, you will periodically receive the related data.

Received Message :

```
1  {  
2    "topic":"v1/{client_id}/obd/info",  
3    "payload":{  
4      "obd.ts" : 1592820539,  
5      "obd.rpm" : 1234,  
6      "obd.speed" : 20  
7    }  
8  }
```

Parameter description, See [General Information](#) & [OBD Parameters](#).

Use [OBD settings](#) to modify group setting(`interval` & `interest`).

3.1.3 GNSS data

Once you have sent the settings message to client, you will periodically receive the related data.

Received Message :

```
1  {  
2    "topic":"v1/{client_id}/gnss/info",  
3    "payload":{  
4      "gnss.ts" : 1592820539,  
5      "gnss.latitude": 40.232213,  
6      "gnss.longitude": 116.34366,  
7      "gnss.altitude": 346.0,  
8      "gnss.speed": 87.6,  
9      "gnss.heading": 234.0,  
10     "gnss.hdop": 1.2,  
11     "gnss.pdop": 2.1,  
12     "gnss.hacc": 1.0,  
13     "gnss.fix": 3,  
14     "gnss.num_sv": 7,  
15     "gnss.date": "2020-4-17",  
16     "gnss.time": "10:16:21"  
17   }  
18 }
```

Parameter description, See [General Information](#) & [GNSS Parameters](#).

Use [GNSS settings](#) to modify group setting(`interval` & `interest`).

3.1.4 Motion data

Once you have sent the settings message to client, you will periodically receive the related data.

Received Message :

```
1  {
2    "topic": "v1/{client_id}/motion/info",
3    "payload": {
4      "motion.ts": 1592820539,
5      "motion.ax": 0.08,
6      "motion.ay": 0.0,
7      "motion.az": 0.0,
8      "motion.gx": 0.15,
9      "motion.gy": 0.03,
10     "motion.gz": -0.47,
11     "motion.roll": -0.65,
12     "motion.pitch": 1.03,
13     "motion.yaw": 302.49
14   }
15 }
```

Parameter description, See [General Information](#) & [Motion Parameters](#).

Use [Motion settings](#) to modify group setting(`interval` & `interest`).

3.1.5 IO data

Once you have sent the settings message to client, you will periodically receive the related data.

Received Message :

```
1  {
2    "topic": "v1/{client_id}/io/info",
3    "payload": {
4      "io.ts": 1592820539,
5      "io.AI1": 0.0,
6      "io.AI2": 0.0,
7      "io.AI3": 0.0,
8      "io.AI4": 0.0,
9      "io.AI5": 0.0,
10     "io.AI6": 0.0,
11     "io.DI1": 0,
12     "io.DI1_pullup": 0,
13     "io.DI2": 0,
14     "io.DI2_pullup": 0,
15     "io.DI3": 0,
16     "io.DI3_pullup": 0,
17     "io.DI4": 0,
18     "io.DI4_pullup": 0,
19     "io.DI5": 0,
20     "io.DI5_pullup": 0,
21     "io.DI6": 0,
22     "io.DI6_pullup": 0,
23     "io.D01": 0,
24     "io.D01_pullup": 0,
25     "io.D02": 0,
26     "io.D02_pullup": 0,
27     "io.D03": 0,
28     "io.D03_pullup": 0,
29     "io.D04": 0,
30     "io.D04_pullup": 0
31   }
32 }
```

Parameter description, See [General Information](#) & [IO Parameters](#).

Use [IO settings](#) to modify group setting(`interval` & `interest`).

3.1.6 Cellular1 data

Once you have sent the settings message to client, you will periodically receive the related data.

Received Message :

```
1 {
2   "topic": "v1/{client_id}/modem1/info",
3   "payload": {
4     "modem1.ts": 1598425365,
5     "modem1.active_sim": 1,
6     "modem1.imei": "862104021247207",
7     "modem1.imsi": "460013231603009",
8     "modem1.iccid": "89860118802836799717",
9     "modem1.signal_lvl": 28,
10    "modem1.reg_status": 1,
11    "modem1.operator": "46001",
12    "modem1.network": 3,
13    "modem1.lac": "EA00",
14    "modem1.cell_id": "71CF520",
15    "cellular1.ts": 1598425501,
16    "cellular1.status": 3,
17    "cellular1.ip": "10.210.255.168",
18    "cellular1.netmask": "255.255.255.255",
19    "cellular1.gateway": "1.1.1.3",
20    "cellular1.dns1": "119.7.7.7",
21    "cellular1.dns2": "119.6.6.6",
22    "cellular1.up_at": 1598424985,
23    "cellular1.down_at": 0,
24    "cellular1.traffic_ts": 1598425501,
25    "cellular1.tx_bytes": 120488,
26    "cellular1.rx_bytes": 34098
27   }
28 }
```

Parameter description, See [General Information](#) & [Cellular Parameters](#).

Use [Cellular settings](#) to modify group setting(`interval` & `interest`).

3.1.7 User data

Once you have sent the settings message to client, you will periodically receive the related data.

Received Message :

```
1  {
2    "topic": "v1/{client_id}/userdata/info",
3    "payload": {
4      "userdata.custom_key": "custom_value",
5      "userdata.serial_number": "SN0125"
6    }
7  }
```

Parameter description, See [General Information](#).

Use [User data settings](#) to modify group setting(`interval` & `interest`).

3.1.8 1-Wire data

Once you have sent the settings message to client, you will periodically receive the related data.

Received Message :

```
1  {
2    "topic":"v1/{client_id}/1-wire/info",
3    "payload":{
4      "1-wire.ts": 1644560984",
5      "1-wire.status" : "Connected",
6      "1-wire.type" : "Temperature & ROM Code",
7      "1-wire.temp_num" : 2,
8      "1-wire.rom_num" : 1,
9      "1-wire.temp1_data" : 24.56,
10     "1-wire.temp1_id" : "aa012029901e7928",
11     "1-wire.temp1_name" : "Inside",
12     "1-wire.temp2_data" : 24.75,
13     "1-wire.temp2_id" : "27012029cf6a8328",
14     "1-wire.temp2_name" : "Outside",
15     "1-wire.rom_code1" : "cc00001b559ae001"
16   }
17 }
```

Parameter description, See [General Information](#).

Use [1-Wire data settings](#) to modify group setting(`interval` & `interest`).

3.2 Reserved group settings

3.2.1 General settings

| Parameter Name | Description | Type | Range | Units | Optional | Note |
|----------------|---|--------|----------|-------|----------|--|
| interval | uploading interval | int | [0,3600] | s | optional | 0: disable timer upload |
| interest | <p>interest parameter</p> <p>List of interested item, each item is represented as key: alias. alias is used in reported messages to rewrite key, a value of "" means no alias.</p> <p>For example, set interest with alias:</p> <pre>{"obd.mil": "MIL", "obd.dtcs": "dtcNum"}</pre> <p>reported data:</p> <pre>{"MIL": "1", "dtcNum": "3"}</pre> <p>set interest without alias:</p> <pre>{"obd.mil": "", "obd.dtcs": ""}</pre> <p>reported data:</p> <pre>{"obd.mil": "1", "obd.dtcs": "3"}</pre> | object | | | optional | <p>'key': FlexAPI Supported parameters</p> <p>'alias': parameter alias</p> <p>OBD group, see OBD Parameters</p> <p>GNSS group, see GNSS Parameters</p> <p>Motion group, see Motion Parameters</p> <p>IO group, see IO Parameters</p> |

For `interval` and `interest` parameters, there are four use cases which apply to both reserved and custom groups.

Case 1. Disable group data uploading

Specify only `interval` field and set its value to 0 in message body.

Note: `group_name` is obd, gnss, motion, io, summary, or custom group name.

Request Message :

```
1  {
2    "topic": "v1/{client_id}/{group_name}/set",
3    "payload": {
4      "interval": 0
5    }
6  }
```

Response Message :

Success :

```
1  {
2    "topic": "v1/{client_id}/{group_name}/set/resp",
3    "result": {
4      "interval": 0
5    }
6  }
```

Failure :

```
1  {
2    "topic": "v1/{client_id}/{group_name}/set/resp",
3    "result": {
4      "error": "invalid_parameter",
5      "error_desc": "invalid parameter"
6    }
7  }
```

Parameter description, see [General Information](#).

Case 2. Change only group data uploading interval

Specify only `interval` field in message body.

Request Message :

```
1  {
2    "topic": "v1/{client_id}/{group_name}/set",
3    "payload": {
4      "interval": 60
5    }
6  }
```

Response Message :

Success :

```
1 {
2   "topic": "v1/{client_id}/{group_name}/set/resp",
3   "result": {
4     "interval": 60
5   }
6 }
```

Failure :

```
1 {
2   "topic": "v1/{client_id}/{group_name}/set/resp",
3   "result": {
4     "error": "invalid_parameter",
5     "error_desc": "invalid parameter"
6   }
7 }
```

Parameter description, see [General Information](#).

Case 3. Change only group data interest

Specify only `interest` field in message body.

Request Message :

```
1 {
2   "topic": "v1/{client_id}/{group_name}/set",
3   "payload": {
4     "interest": {"gnss.latitude": "lat", "gnss.longitude": "lon",
5     "obd.speed": "speed", "obd.odo": ""}
6   }
7 }
```

Response Message :

Success :

```
1 {
2   "topic": "v1/{client_id}/{group_name}/set/resp",
3   "result": {
4     "interest": {"obd.speed": "speed", "obd.odo": "", "gnss.latitude": "lat",
5     "gnss.longitude": "lon"}
6   }
7 }
```

Failure :

```
1 {
2   "topic": "v1/{client_id}/{group_name}/set/resp",
3   "result": {
4     "error": "invalid_parameter",
5     "error_desc": "invalid parameter"
6   }
7 }
```


Parameter description, see [General Information](#).

Case 4. Change both interest and uploading interval

Specify both `interest` and `interval` fields in message body.

Request Message :

```
1  {
2    "topic":"v1/{client_id}/{group_name}/set",
3    "payload":{
4      "interval": 60,
5      "interest": {"gnss.latitude": "lat", "gnss.longitude": "lon",
6      "obd.speed": "speed", "obd.odo": ""}
7    }
}
```

Response Message :

Success :

```
1  {
2    "topic":"v1/{client_id}/{group_name}/set/resp",
3    "result":{
4      "interval": 60,
5      "interest":{"obd.speed":"speed", "obd.odo":"","gnss.latitude":"lat",
6      "gnss.longitude":"lon"}
7    }
}
```

Failure :

```
1  {
2    "topic":"v1/{client_id}/{group_name}/set/resp",
3    "result":{
4      "error":"invalid_parameter",
5      "error_desc":"invalid parameter"
6    }
7  }
```

Parameter description, see [General Information](#).

3.2.2 Summary settings

Send a message to client with this topic to set your interested data and uploading interval.

Default interval is 10s. Default interest is available parameters from the [FlexAPI supported Parameters](#).

Request Message :

```
1 {
2   "topic": "v1/{client_id}/summary/set",
3   "payload":{
4     "interval": 60,
5     "interest": {"gnss.latitude": "lat", "gnss.longitude": "lon",
6     "obd.speed": "speed", "obd.odo": ""}
7   }
```

Response Message :

Success :

```
1 {
2   "topic":"v1/{client_id}/summary/set/resp",
3   "result":{
4     "interval": 60,
5     "interest":{"obd.speed":"speed", "obd.odo":"","gnss.latitude":"lat",
6     "gnss.longitude":"lon"}
7   }
```

Failure :

```
1 {
2   "topic":"v1/{client_id}/summary/set/resp",
3   "result":{
4     "error":"invalid_parameter",
5     "error_desc":"invalid parameter"
6   }
7 }
```

Parameter description, see [General Information](#).

3.2.3 OBD settings

Send a message to client with this topic to set your interested data and uploading interval.

Default interval is 10s. Default interest is available parameters from the [OBD Parameters](#).

Request Message :

```
1  {
2    "topic": "v1/{client_id}/obd/set",
3    "payload":{
4      "interval": 60,
5      "interest": {"obd.mil": "MIL", "obd.dtcs": "dtcNum", "obd.rpm":
"engineSpeed"}
6    }
7  }
```

Response Message :

Success :

```
1  {
2    "topic":"v1/{client_id}/obd/set/resp",
3    "result":{
4      "interval": 60,
5      "interest": {"obd.mil": "MIL", "obd.dtcs": "dtcNum", "obd.rpm":
"engineSpeed"}
6    }
7  }
```

Failure :

```
1  {
2    "topic":"v1/{client_id}/obd/set/resp",
3    "result":{
4      "error":"invalid_parameter",
5      "error_desc":"invalid parameter"
6    }
7  }
```

Parameter description, see [General Information](#).

3.2.4 GNSS settings

Send a message to client with this topic to set your interested data and uploading interval.

default interval is 10s. default interest is available parameters from the [GNSS Parameters](#).

Request Message :

```
1  {
2    "topic": "v1/{client_id}/gnss/set",
3    "payload":{
4      "interval": 60,
5      "interest": {"gnss.latitude": "lat", "gnss.longitude": "lon",
6      "gnss.altitude": "alt"}
7    }
```

Response Message :

Success :

```
1  {
2    "topic":"v1/{client_id}/gnss/set/resp",
3    "result":{
4      "interval": 60,
5      "interest": {"gnss.latitude": "lat", "gnss.longitude": "lon",
6      "gnss.altitude": "alt"}
7    }
```

Failure :

```
1  {
2    "topic":"v1/{client_id}/gnss/set/resp",
3    "result":{
4      "error":"invalid_parameter",
5      "error_desc":"invalid parameter"
6    }
7  }
```

Parameter description, see [General Information](#).

3.2.5 Motion settings

Send a message to client with this topic to set your interested data and uploading interval.
default interval is 10s. default interest is available parameters from the [Motion Parameters](#).

Request Message :

```
1  {
2    "topic": "v1/{client_id}/motion/set",
3    "payload":{
4      "interval": 60,
5      "interest": {"motion.ax": "acceleration_x", "motion.ay":
6        "acceleration_y", "motion.az": "acceleration_z"}
7    }
}
```

Response Message :

Success :

```
1  {
2    "topic":"v1/{client_id}/motion/set/resp",
3    "result":{
4      "interval": 60,
5      "interest": {"motion.ax": "acceleration_x", "motion.ay":
6        "acceleration_y", "motion.az": "acceleration_z"}
7    }
}
```

Failure :

```
1  {
2    "topic":"v1/{client_id}/motion/set/resp",
3    "result":{
4      "error":"invalid_parameter",
5      "error_desc":"invalid parameter"
6    }
7  }
```

Parameter description, see [General Information](#).

3.2.6 IO settings

Send a message to client with this topic to set your interested data and uploading interval.

default interval is 10s. default interest is available parameters from the [IO Parameters](#).

Request Message :

```
1  {
2    "topic": "v1/{client_id}/io/set",
3    "payload":{
4      "interval": 60,
5      "interest": {"io.AI1": "ai1", "io.AI2": "ai2", "io.AI3": "ai3"}
6    }
7  }
```

Response Message :

Success :

```
1  {
2    "topic":"v1/{client_id}/io/set/resp",
3    "result":{
4      "interval": 60,
5      "interest": {"io.AI1": "ai1", "io.AI2": "ai2", "io.AI3": "ai3"}
6    }
7  }
```

Failure :

```
1  {
2    "topic":"v1/{client_id}/io/set/resp",
3    "result":{
4      "error":"invalid_parameter",
5      "error_desc":"invalid parameter"
6    }
7  }
```

Parameter description, see [General Information](#).

3.2.7 Cellular1 settings

Send a message to client with this topic to set your interested data and uploading interval.

default interval is 30s. default interest is available parameters from the [Cellular Parameters](#).

Request Message :

```
1  {
2    "topic": "v1/{client_id}/cellular1/set",
3    "payload":{
4      "interval": 60,
5      "interest": {"modem1.active_sim": "active_sim", "modem1.signal_lvl":
6        "signal_lvl", "cellular1.status": "status"}
7    }
}
```

Response Message :

Success :

```
1  {
2    "topic":"v1/{client_id}/cellular1/set/resp",
3    "result":{
4      "interval": 60,
5      "interest": {"modem1.active_sim": "active_sim", "modem1.signal_lvl":
6        "signal_lvl", "cellular1.status": "status"}
7    }
}
```

Failure :

```
1  {
2    "topic":"v1/{client_id}/cellular1/set/resp",
3    "result":{
4      "error":"invalid_parameter",
5      "error_desc":"invalid parameter"
6    }
7  }
```

Parameter description, see [General Information](#).

3.2.8 User Data settings

3.2.8.1 Insert user data

Send a message to client with this topic to insert new user data.

Request Message :

```
1  {
2    "topic": "v1/{client_id}/userdata/set",
3    "payload":{
4      "insert": {
5        "userdata.custom_key": "custom_value",
6        "userdata.serial_number": "SN0125"
7      }
8    }
9  }
```

Response Message :

Success :

```
1  {
2    "topic":"v1/{client_id}/userdata/set/resp",
3    "result":{
4      "inserted": {
5        "userdata.custom_key": "custom_value",
6        "userdata.serial_number": "SN0125"
7      }
8    }
9  }
```

Failure :

```
1  {
2    "topic":"v1/{client_id}/userdata/set/resp",
3    "result":{
4      "error":"invalid_parameter",
5      "error_desc":"invalid parameter"
6    }
7  }
```

3.2.8.2 Update user data

Send a message to client with this topic to update your user data.

Note: The data to be updated must be data that has already been created.

Request Message :


```

1  {
2    "topic": "v1/{client_id}/userdata/set",
3    "payload":{
4      "update": {
5        "userdata.serial_number": "SN0232"
6      }
7    }
8  }

```

Response Message :

Success :

```

1  {
2    "topic":"v1/{client_id}/userdata/set/resp",
3    "result":{
4      "updated": {
5        "userdata.serial_number": "SN0232"
6      }
7    }
8  }

```

Failure :

```

1  {
2    "topic":"v1/{client_id}/userdata/set/resp",
3    "result":{
4      "error":"invalid_parameter",
5      "error_desc":"invalid parameter"
6    }
7  }

```

3.2.8.3 Set User Data interest

Send a message to client with this topic to set your interested data and uploading interval.

default interval is 10s.

Request Message :

```

1  {
2    "topic": "v1/{client_id}/userdata/set",
3    "payload":{
4      "interval": 60,
5      "interest": {
6        "userdata.custom_key":"custom_key",
7        "userdata.serial_number":"serial_number"
8      }
9    }
10 }

```

Response Message :

Success :

```
1  {
2    "topic": "v1/{client_id}/userdata/set/resp",
3    "result": {
4      "interval": 60,
5      "interest": {
6        "userdata.custom_key": "custom_key",
7        "userdata.serial_number": "serial_number"
8      }
9    }
10 }
```

Failure :

```
1  {
2    "topic": "v1/{client_id}/userdata/set/resp",
3    "result": {
4      "error": "invalid_parameter",
5      "error_desc": "invalid parameter"
6    }
7  }
```

3.2.8.4 Delete user data

Send a message to client with this topic to delete your user data.

Note: The data to be deleted must be data that has already been created.

Request Message :

```
1  {
2    "topic": "v1/{client_id}/userdata/set",
3    "payload": {
4      "delete": {
5        "userdata.serial_number": "serial_number"
6      }
7    }
8  }
```

Response Message :

Success :

```
1  {
2    "topic": "v1/{client_id}/userdata/set/resp",
3    "result": {
4      "deleted": {
5        "userdata.serial_number": "serial_number"
6      }
7    }
8  }
```

Failure :

```
1 {
2   "topic":"v1/{client_id}/userdata/set/resp",
3   "result":{
4     "error":"invalid_parameter",
5     "error_desc":"invalid parameter"
6   }
7 }
```

Parameter description, see [General Information](#).

3.2.9 1-Wire Data Settings

Send a message to client with this topic to set your interested data and uploading interval.

default interval is 10s. default interest is available parameters from the [1-Wire Parameters](#).

Request Message :

```
1  {
2    "topic": "v1/{client_id}/1-wire/set",
3    "payload":{
4      "interval": 20,
5      "interest": {
6        "1-wire.temp1_data" : "data1",
7        "1-wire.temp1_id" : "ID1",
8        "1-wire.temp1_name" : "name1"
9      }
10   }
11 }
```

Response Message :

Success :

```
1  {
2    "topic":"v1/{client_id}/1-wire/set/resp",
3    "result":{
4      "interval" : 20,
5      "interest" : {
6        "1-wire.temp1_data" : "data1",
7        "1-wire.temp1_id" : "ID1",
8        "1-wire.temp1_name" : "name1"
9      }
10   }
11 }
```

Failure :

```
1  {
2    "topic":"v1/{client_id}/1-wire/set/resp",
3    "result":{
4      "error":"invalid_parameter",
5      "error_desc":"invalid parameter"
6    }
7  }
```

Parameter description, see [General Information](#).

3.3 On demand reserved group data get

3.3.1 Summary data

Send a message to client with this topic to get summary data on demand.

Request Message :

```
1 {  
2   "topic": "v1/{client_id}/summary/refresh"  
3 }
```

Response Message :

Success :

```
1 {  
2   "topic": "v1/{client_id}/summary/refresh/resp",  
3   "result": {  
4     "gnss.latitude": 40.232213,  
5     "gnss.longitude": 116.34366,  
6     "gnss.altitude": 346.0,  
7     "gnss.speed": 87.6,  
8     "gnss.heading": 234.0,  
9     "gnss.hdop": 1.2,  
10    "gnss.pdop": 2.1,  
11    "gnss.hacc": 1.0,  
12    "gnss.fix": 3,  
13    "gnss.num_sv": 7,  
14    "gnss.date": "2020-4-17",  
15    "gnss.time": "10:16:21",  
16    "obd.rpm" : 1234,  
17    "obd.speed" : 20,  
18    "obd.odo": 1400,  
19    "obd.up_time": 3600,  
20    "io.AI1": 0.0,  
21    "io.AI2": 0.0,  
22    "io.AI3": 0.0,  
23    "io.AI4": 0.0,  
24    "io.AI5": 0.0,  
25    "io.AI6": 0.0,  
26    "io.DI1": 0,  
27    "io.DI1_pullup": 0,  
28    "io.DI2": 0,  
29    "io.DI2_pullup": 0,  
30    "io.DI3": 0,  
31    "io.DI3_pullup": 0,  
32    "io.DI4": 0,  
33    "io.DI4_pullup": 0,  
34    "io.DI5": 0,  
35    "io.DI5_pullup": 0,  
36    "io.DI6": 0,  
37    "io.DI6_pullup": 0,  
38    "io.D01": 0,  
39    "io.D01_pullup": 0,  
40    "io.D02": 0,
```

```
41     "io.D02_pullup": 0,  
42     "io.D03": 0,  
43     "io.D03_pullup": 0,  
44     "io.D04": 0,  
45     "io.D04_pullup": 0  
46   }  
47 }
```

Failure :

```
1  {  
2  "topic": "v1/{client_id}/summary/refresh/resp",  
3  "result": {  
4    "error": "invalid_parameter",  
5    "error_desc": "invalid parameter"  
6  }  
7 }
```

Parameter description, see [General Information](#) & [FlexAPI supported Parameters](#).

3.3.2 OBD data

Send a message to client with this topic to get OBD data on demand.

Request Message :

```
1 {
2   "topic": "v1/{client_id}/obd/refresh"
3 }
```

Response Message :

Success :

```
1 {
2   "topic": "v1/{client_id}/obd/refresh/resp",
3   "result": {
4     "obd.rpm": 34245,
5     "obd.speed": 53255
6   }
7 }
```

Failure :

```
1 {
2   "topic": "v1/{client_id}/obd/refresh/resp",
3   "result": {
4     "error": "invalid_parameter",
5     "error_desc": "invalid parameter"
6   }
7 }
```

Parameter description, reference [General Information](#) & [OBD Parameters](#).

3.3.3 GNSS data

Send a message to client with this topic to get GNSS data on demand.

Request Message :

```
1 {
2   "topic": "v1/{client_id}/gnss/refresh"
3 }
```

Response Message :

Success :

```
1 {
2   "topic": "v1/{client_id}/gnss/refresh/resp",
3   "result": {
4     "gnss.latitude": 40.232213,
5     "gnss.longitude": 116.34366,
6     "gnss.altitude": 346.0,
7     "gnss.speed": 87.6,
8     "gnss.heading": 234.0,
9     "gnss.hdop": 1.2,
10    "gnss.pdop": 2.1,
11    "gnss.hacc": 1.0,
12    "gnss.fix": 3,
13    "gnss.num_sv": 7,
14    "gnss.date": "2020-4-17",
15    "gnss.time": "10:16:21"
16  }
17 }
```

Failure :

```
1 {
2   "topic": "v1/{client_id}/gnss/refresh/resp",
3   "result": {
4     "error": "invalid_parameter",
5     "error_desc": "invalid parameter"
6   }
7 }
```

Parameter description, reference [General Information](#) & [GNSS Parameters](#).

3.3.4 Motion data

Send a message to client with this topic to get motion data on demand.

Request Message :

```
1 | {
2 |   "topic": "v1/{client_id}/motion/refresh"
3 | }
```

Response Message :

Success :

```
1 | {
2 |   "topic": "v1/{client_id}/motion/refresh/resp",
3 |   "result": {
4 |     "motion.ax": 0.08,
5 |     "motion.ay": 0.0,
6 |     "motion.az": 0.0,
7 |     "motion.gx": 0.15,
8 |     "motion.gy": 0.03,
9 |     "motion.gz": -0.47,
10 |    "motion.roll": -0.65,
11 |    "motion.pitch": 1.03,
12 |    "motion.yaw": 302.49
13 |   }
14 | }
```

Failure :

```
1 | {
2 |   "topic": "v1/{client_id}/motion/refresh/resp",
3 |   "result": {
4 |     "error": "invalid_parameter",
5 |     "error_desc": "invalid parameter"
6 |   }
7 | }
```

Parameter description, reference [General Information](#) & [Motion Parameters](#).

3.3.5 IO data

Send a message to client with this topic to get IO data on demand.

Request Message :

```
1 {
2   "topic": "v1/{client_id}/io/refresh"
3 }
```

Response Message :

Success :

```
1 {
2   "topic": "v1/{client_id}/io/refresh/resp",
3   "result": {
4     "io.AI1": 0.0,
5     "io.AI2": 0.0,
6     "io.AI3": 0.0,
7     "io.AI4": 0.0,
8     "io.AI5": 0.0,
9     "io.AI6": 0.0,
10    "io.DI1": 0,
11    "io.DI1_pullup": 0,
12    "io.DI2": 0,
13    "io.DI2_pullup": 0,
14    "io.DI3": 0,
15    "io.DI3_pullup": 0,
16    "io.DI4": 0,
17    "io.DI4_pullup": 0,
18    "io.DI5": 0,
19    "io.DI5_pullup": 0,
20    "io.DI6": 0,
21    "io.DI6_pullup": 0,
22    "io.D01": 0,
23    "io.D01_pullup": 0,
24    "io.D02": 0,
25    "io.D02_pullup": 0,
26    "io.D03": 0,
27    "io.D03_pullup": 0,
28    "io.D04": 0,
29    "io.D04_pullup": 0
30  }
31 }
```

Failure :

```
1 {
2   "topic": "v1/{client_id}/io/refresh/resp",
3   "result": {
4     "error": "invalid_parameter",
5     "error_desc": "invalid parameter"
6   }
7 }
```

Parameter description, reference [General Information](#) & [IO Parameters](#).

3.3.6 Cellular1 Data

Send a message to client with this topic to get cellular data on demand.

Request Message :

```
1 {
2   "topic": "v1/{client_id}/cellular1/refresh"
3 }
```

Response Message :

Success :

```
1 {
2   "topic": "v1/{client_id}/cellular1/refresh/resp",
3   "result": {
4     "modem1.ts": 1598425245,
5     "modem1.active_sim": 1,
6     "modem1.imei": "862104021247207",
7     "modem1.imsi": "460013231603009",
8     "modem1.iccid": "89860118802836799717",
9     "modem1.signal_lvl": 29,
10    "modem1.reg_status": 1,
11    "modem1.operator": "46001",
12    "modem1.network": 3,
13    "modem1.lac": "EA00",
14    "modem1.cell_id": "71CF520",
15    "cellular1.ts": 1598425316,
16    "cellular1.status": 3,
17    "cellular1.ip": "10.210.255.168",
18    "cellular1.netmask": "255.255.255.255",
19    "cellular1.gateway": "1.1.1.3",
20    "cellular1.dns1": "119.7.7.7",
21    "cellular1.dns2": "119.6.6.6",
22    "cellular1.up_at": 1598424985,
23    "cellular1.down_at": 0,
24    "cellular1.traffic_ts": 1598425316,
25    "cellular1.tx_bytes": 83777,
26    "cellular1.rx_bytes": 30258
27  }
28 }
```

Failure :

```
1 {
2   "topic": "v1/{client_id}/cellular1/refresh/resp",
3   "result": {
4     "error": "invalid_parameter",
5     "error_desc": "invalid parameter"
6   }
7 }
```

Parameter description, reference [General Information](#) & [Cellular Parameters](#).

3.3.7 System Info

Send a message to client with this topic to get system info on demand.

Request Message :

```
1 {
2   "topic": "v1/{client_id}/sysinfo/refresh"
3 }
```

Response Message :

Success :

```
1 {
2   "topic": "v1/{client_id}/sysinfo/refresh/resp",
3   "result": {
4     "sysinfo.ts": 1598424935,
5     "sysinfo.language": "Chinese",
6     "sysinfo.hostname": "VG710",
7     "sysinfo.timezone": "UTC-8",
8     "sysinfo.model_name": "VG710",
9     "sysinfo.oem_name": "inhand",
10    "sysinfo.serial_number": "VG7102019052101",
11    "sysinfo.firmware_version": "1.0.0.r13083",
12    "sysinfo.bootloader_version": "2012.07.r235",
13    "sysinfo.product_number": "TL01",
14    "sysinfo.description": "www.inhand.com.cn",
15    "sysinfo.lan_mac": "00:18:05:10:99:66",
16    "sysinfo.wlan_mac": "00:18:05:10:99:03",
17    "sysinfo.wlan_5g_mac": "00:18:05:10:99:04"
18  }
19 }
```

Failure :

```
1 {
2   "topic": "v1/{client_id}/sysinfo/refresh/resp",
3   "result": {
4     "error": "invalid_parameter",
5     "error_desc": "invalid parameter"
6   }
7 }
```

Parameter description, reference [General Information](#) & [System Parameters](#).

3.3.8 User Data

Send a message to client with this topic to get user data on demand.

Request Message :

```
1 | {  
2 |   "topic": "v1/{client_id}/userdata/refresh"  
3 | }
```

Response Message :

Success :

```
1 | {  
2 |   "topic": "v1/{client_id}/userdata/refresh/resp",  
3 |   "result": {  
4 |     "userdata.custom_key": "custom_value",  
5 |     "userdata.serial_number": "SN0125"  
6 |   }  
7 | }
```

Failure :

```
1 | {  
2 |   "topic": "v1/{client_id}/userdata/refresh/resp",  
3 |   "result": {  
4 |     "error": "invalid_parameter",  
5 |     "error_desc": "invalid parameter"  
6 |   }  
7 | }
```

Parameter description, reference [General Information](#).

3.3.9 APP data

Send a message to client with this topic to get APP data on demand.

Request Message :

```
1 | {  
2 |   "topic": "v1/{client_id}/app/refresh"  
3 | }
```

Response Message :

Success :

```
1 | {
2 |   "topic":"v1/{client_id}/app/refresh/resp",
3 |   "result": {
4 |     "app.wifi_mode_2g": 0,
5 |     "app.wifi_mode_5g": 0
6 |   }
7 | }
```

Failure :

```
1 | {
2 |   "topic":"v1/{client_id}/app/refresh/resp",
3 |   "result":{
4 |     "error":"invalid_parameter",
5 |     "error_desc":"invalid parameter"
6 |   }
7 | }
```

Parameter description, reference [General Information](#) & [APP Parameters](#).

3.3.10 1-Wire Data

Send a message to client with this topic to get 1-wire data on demand.

Request Message :

```
1 | {
2 |   "topic": "v1/{client_id}/1-wire/refresh"
3 | }
```

Response Message :

Success :

```
1 | {
2 |   "topic": "v1/{client_id}/1-wire/refresh/resp",
3 |   "result": {
4 |     "1-wire.ts": 1644560984,
5 |     "1-wire.status" : "Connected",
6 |     "1-wire.type" : "Temperature & ROM Code",
7 |     "1-wire.temp_num" : 2,
8 |     "1-wire.rom_num" : 1,
9 |     "1-wire.temp1_data" : 24.06,
10 |    "1-wire.temp1_id" : "aa012029901e7928",
11 |    "1-wire.temp1_name" : "Inside",
12 |    "1-wire.temp2_data" : 23.69,
13 |    "1-wire.temp2_id" : "27012029cf6a8328",
14 |    "1-wire.temp2_name" : "Outside",
15 |    "1-wire.rom_code1" : "cc00001b559ae001"
16 |   }
17 | }
```

Failure :

```
1 | {
2 |   "topic": "v1/{client_id}/1-wire/refresh/resp",
3 |   "result": {
4 |     "error": "invalid_parameter",
5 |     "error_desc": "invalid parameter"
6 |   }
7 | }
```

Parameter description, reference [General Information](#) & [1-wire Parameters](#).

3.4 Control Service

3.4.1 IO Control

Send a message to client with this topic to turn on/off the digital output.

Request Message :

```
1  {
2    "topic": "v1/{client_id}/io/control",
3    "payload":{
4      "io.D01": 0,
5      "io.D01_pullup": 0,
6      "io.D02": 0,
7      "io.D02_pullup": 0,
8      "io.D03": 0,
9      "io.D03_pullup": 0,
10     "io.D04": 0,
11     "io.D04_pullup": 0
12   }
13 }
```

Response Message :

Success :

```
1  {
2    "topic":"v1/{client_id}/io/control/resp",
3    "result": {
4      "io.D01": 0,
5      "io.D01_pullup": 0,
6      "io.D02": 0,
7      "io.D02_pullup": 0,
8      "io.D03": 0,
9      "io.D03_pullup": 0,
10     "io.D04": 0,
11     "io.D04_pullup": 0
12   }
13 }
```

Failure :

```
1  {
2    "topic":"v1/{client_id}/io/control/resp",
3    "result":{
4      "error":"invalid_parameter",
5      "error_desc":"invalid parameter"
6    }
7  }
```

Parameter description, see [General Information](#) & [IO Parameters](#) digital output part.

3.4.2 APP Control

Send a message to client with this topic to notify APP to do something.

Request Message :

```
1  {
2    "topic": "v1/{client_id}/app/control",
3    "payload":{
4      "app.wifi_mode_2g": 0,
5      "app.wifi_mode_5g": 0
6    }
7  }
```

Response Message :

Success :

```
1  {
2    "topic":"v1/{client_id}/app/control/resp",
3    "result": {
4      "app.wifi_mode_2g": 0,
5      "app.wifi_mode_5g": 0
6    }
7  }
```

Failure :

```
1  {
2    "topic":"v1/{client_id}/app/control/resp",
3    "result":{
4      "error":"invalid_parameter",
5      "error_desc":"invalid parameter"
6    }
7  }
```

Parameter description, see [General Information](#) & [APP Parameters](#) digital output part.

4. Advanced usage

4.1 Custom group settings

4.1.1 Create/Update custom group

Use the following topics to define your interested groups and set their uploading intervals.

For `interval` and `interest` parameters, there are four use cases. See [General settings](#).

Request Message :

```
1  {
2    "topic": "v1/{client_id}/group/set",
3    "payload":{
4      "settings": [{
5        "group_name": "group1",
6        "interval": 60,
7        "interest": {"gnss.latitude": "lat","gnss.longitude":
"lon","gnss.altitude": "alt","obd.speed": "speed","obd.odo":
"odo","userdata.custom_key":"custom_key"}
8      },{
9        "group_name": "group2",
10       "interval": 30,
11       "interest": {"io.DI1": "DI1","io.DI2": "DI2","io.DI3":
"DI3","io.DI4": "DI4","io.D01": "D01","io.D02": "D02","io.D03": "D03"}
12     }
13   ]
14 }
15 }
```

Response Message :

Success :

```
1  {
2    "topic":"v1/{client_id}/group/set/resp",
3    "result": {
4      "settings": [{
5        "group_name": "group1",
6        "interval": 60,
7        "interest": {"gnss.latitude": "lat","gnss.longitude":
"lon","gnss.altitude": "alt","obd.speed": "speed","obd.odo":
"odo","userdata.custom_key":"custom_key"}
8      },{
9        "group_name": "group2",
10       "interval": 30,
11       "interest": {"io.DI1": "DI1","io.DI2": "DI2","io.DI3":
"DI3","io.DI4": "DI4","io.D01": "D01","io.D02": "D02","io.D03": "D03"}
12     }
13   ]
14 }
15 }
```

Failure :

```
1 {
2   "topic":"v1/{client_id}/group/set/resp",
3   "result":{
4     "error":"invalid_parameter",
5     "error_desc":"invalid parameter"
6   }
7 }
```

Parameter description, see [General Information](#) & [General settings](#).

4.1.2 Get custom group settings

Use the following topics to get custom group settings.

Request Message :

```
1 {
2   "topic": "v1/{client_id}/group/get"
3 }
```

Response Message :

Success :

```
1 {
2   "topic": "v1/{client_id}/group/get/resp",
3   "result": [{
4     "group_name": "group1",
5     "interval": 60,
6     "interest": {"gnss.latitude": "lat", "gnss.longitude":
"lon", "gnss.altitude": "alt", "obd.speed": "speed", "obd.odo":
"odo", "userdata.custom_key": "custom_key"}
7   }, {
8     "group_name": "group2",
9     "interval": 30,
10    "interest": {"io.DI1": "DI1", "io.DI2": "DI2", "io.DI3":
"DI3", "io.DI4": "DI4", "io.D01": "D01", "io.D02": "D02", "io.D03": "D03"}
11   }]
12 }
```

Failure :

```
1 {
2   "topic": "v1/{client_id}/group/get/resp",
3   "result": {
4     "error": "invalid_parameter",
5     "error_desc": "invalid parameter"
6   }
7 }
```

Parameter description, see [General Information](#) & [General settings](#).

4.1.3 Remove custom group

Use the following topics to remove group.

Request Message :

```
1  {
2    "topic": "v1/{client_id}/group/set",
3    "payload":{
4      "settings": [{
5        "group_name": "group1",
6        "interest": null
7      },{
8        "group_name": "group2",
9        "interest": null
10     }
11   ]
12 }
13 }
```

Response Message :

Success :

```
1  {
2    "topic": "v1/{client_id}/group/set/resp",
3    "result": [{
4      "group_name": "group1",
5      "interest": null
6    },{
7      "group_name": "group2",
8      "interest": null
9    }
10 ]
11 }
```

Failure :

```
1  {
2    "topic": "v1/{client_id}/group/set/resp",
3    "result":{
4      "error": "invalid_parameter",
5      "error_desc": "invalid parameter"
6    }
7  }
```

Parameter description, see [General Information](#) & [General settings](#).

4.2 Timer triggered custom group data get

Once you have sent a settings message, you will periodically receive the related data.

Response Message :

```
1  {
2    "topic": "v1/{client_id}/{group_name}/info",
3    "payload": {
4      "lat": 40.232213,
5      "ai1": 1.0,
6      "obd.speed": 50,
7      "userdata.custom_key": "custom_value"
8    }
9  }
```

Parameter description, see [General Information](#) & [FlexAPI supported Parameters](#).

4.3 On demand custom group data get

Send a message to get `group_name` data on demand.

Request Message :

```
1  {
2    "topic": "v1/{client_id}/{group_name}/refresh"
3  }
```

Response Message :

Success :

```
1  {
2    "topic": "v1/{client_id}/{group_name}/refresh/resp",
3    "result": {
4      "lat": 40.232213,
5      "ai1": 1.0,
6      "obd.speed": 50,
7      "userdata.custom_key": "custom_value"
8    }
9  }
```

Failure :

```
1  {
2    "topic": "v1/{client_id}/{group_name}/refresh/resp",
3    "result": {
4      "error": "invalid_parameter",
5      "error_desc": "invalid parameter"
6    }
7  }
```

Parameter description, see [General Information](#) & [FlexAPI supported Parameters](#).

Appendix A. FlexAPI supported Parameters

A.1 GNSS Parameters

| Parameter Name | Description | Type | Range | Units | Optional | Note |
|----------------|---|--------|---|-------|-----------|--|
| gnss.ts | The last time the GNSS info was updated | int | | s | | UNIX timestamp, in seconds since the epoch |
| gnss.latitude | latitude | float | | deg | mandatory | |
| gnss.longitude | longitude | float | | deg | mandatory | |
| gnss.altitude | altitude | float | | deg | mandatory | |
| gnss.speed | speed | float | | km/h | mandatory | |
| gnss.heading | heading | float | [0.0,360.0] | ° | | |
| gnss.hdop | Horizontal DOP | float | | | | |
| gnss.pdop | Position DOP | float | | | | |
| gnss.hacc | Horizontal accuracy estimate | float | | m | | |
| gnss.fix | GNSS fix status | int | 0: NoFix; 1: DR Only 2: 2D; 3: 3D 4: GNSS+DR; 5: Time Only | | | |
| gnss.num_sv | number of satellites used | int | [0,12] | | | |
| gnss.date | date | string | format: yy-mm-dd | | | |
| gnss.time | time | string | format: hh:mm:ss | | | |

A.2 Motion Parameters

| Parameter Name | Description | Type | Range | Units | Optional | Note |
|----------------|---|-------|-------|-------|-----------|--|
| motion.ts | The last time the Motion info was updated | int | | s | | UNIX timestamp, in seconds since the epoch |
| motion.ax | x-axis accelerometer | float | | g | mandatory | accelerometer |
| motion.ay | y-axis accelerometer | float | | g | mandatory | accelerometer |
| motion.az | z-axis accelerometer | float | | g | mandatory | accelerometer |
| motion.gx | x-axis gyroscope | float | | deg/s | mandatory | gyroscope |
| motion.gy | y-axis gyroscope | float | | deg/s | mandatory | gyroscope |
| motion.gz | z-axis gyroscope | float | | deg/s | mandatory | gyroscope |
| motion.roll | roll angle | float | | deg | mandatory | |
| motion.pitch | pitch angle | float | | deg | mandatory | |
| motion.yaw | yaw angle | float | | deg | mandatory | |

A.3 IO Parameters

| Parameter Name | Description | Type | Range | Units | Optional | Note |
|-----------------|---------------------------------------|-------|--|-------|-----------|--|
| io.ts | The last time the IO info was updated | int | | s | | UNIX timestamp, in seconds since the epoch |
| io.AI{n} | Analog Input n | float | [0,36.0] null : invalid | V | mandatory | n: [1,6] |
| io.DI{n} | Digital Input n | int | 0: low 1: high null : invalid | | mandatory | n: [1,6] |
| io.DI{n}_pullup | Digital Input pullup n | int | 0: down 1: up null : invalid | | mandatory | n: [1,6] |
| io.DO{n} | Digital Output n | int | 0: low 1: high null : invalid | | mandatory | n: [1,4] |
| io.DO{n}_pullup | Digital Output pullup n | int | 0: down 1: up null : invalid | | mandatory | n:[1,4] |

A.4 OBD Parameters

| Parameter Name | Description | Type | Range | Units | Optional | Note |
|----------------|--|---------|--|-------|----------|--|
| obd.ts | The last time the OBD info was updated | int | | s | | UNIX timestamp, in seconds since the epoch |
| obd.vin | Vehicle Identification Number | string | | | | |
| obd.e_load | Engine Load | double | [0,250] 0: stopped >0: started | % | | |
| obd.c_temp | Engine Coolant Temp | int | [-40,215] | °C | | |
| obd.rpm | Engine Speed | double | [0,16383.75] | RPM | | |
| obd.speed | Vehicle Speed | int | [0,255] | km/h | | |
| obd.f_lvl | Fuel Level | double | [0,100] | % | | |
| obd.f_rate | Fuel Rate | double | [0,3276.75] | l/h | | |
| obd.dtcs | DTC Count | int | [0,250] | | | |
| obd.mil | MIL Status | boolean | 0:off 1:on | | | |
| obd.b_volt | Battery Voltage | double | [0,3212.75] | V | | |
| obd.a_temp | Ambient Air Temp | int | [-273,1734] | °C | | |
| obd.o_temp | Engine Oil Temp | int | [-273,1734] | °C | | |
| obd.up_time | Engine Start Time | int | [0,65535] | sec | | |
| obd.m_dist | Distance traveled while MIL is Activated | int | [0,65535] | km | | |
| obd.d_dist | Distance traveled since DTCs cleared | int | [0,65535] | km | | |
| obd.m_time | Engine run time while MIL activated | int | [0,65535] | min | | |
| obd.d_time | Engine run time since DTCs cleared | int | [0,65535] | min | | |
| obd.f_press | Fuel Pressure | int | [0,6425] | kPa | | |
| obd.t_pos | Throttle Position | double | [0,100] | % | | |
| obd.brake | Brake Switch Status | boolean | 0:brake pedal released 1:brake pedal depressed | | | |
| obd.parking | Parking Brake Switch Status | boolean | 0:parking brake not set 1:parking brake set | | | |
| obd.s_w_angle | Steering Wheel Angle | double | [-31.374,31.374] | rad | | |
| obd.f_econ | Fuel Economy | double | [0,125.50] | km/L | | |
| obd.odo | Odometer | double | [0,526385151.875] | km | | |
| obd.a_pos | Accelerator Pedal Position | double | [0,100] | % | | |
| obd.t_dist | trip distance | double | [0,526385151.875] | km | | |
| obd.i_temp | Intake Manifold Temp | int | [-40,215] | °C | | |

| Parameter Name | Description | Type | Range | Units | Optional | Note |
|--------------------|--|-------|--------------------------------|-------|----------|------|
| obd.i_press | Intake Manifold Pressure | int | [0,255] | kPa | | |
| obd.b_press | Barometric Pressure | int | [0,255] | kPa | | |
| obd.f_r_press | Fuel Rail Pressure | int | [0,65530] | kPa | | |
| obd.r_torque | Engine reference Torque | int | [0,64255] | Nm | | |
| obd.f_torque | Engine friction Torque | float | [-125,125] | % | | |
| obd.max_avl_torque | Engine Maximum Available Torque | float | [0,100] | % | | |
| obd.a_torque | Engine actual Torque | float | [-125,125] | % | | |
| obd.d_e_f_vol | Diesel Exhaust Fluid Volume | float | [0,100] | % | | |
| obd.mf_mon | Misfire Monitor Status | int | 0:not completed 1:completed | | | |
| obd.f_s_mon | Fuel System Monitor Status | int | 0:not completed 1:completed | | | |
| obd.c_c_mon | Comprehensive Component Monitor Status | int | 0:not completed 1:completed | | | |
| obd.c_mon | Catalyst Monitor Status | int | 0:not completed 1:completed | | | |
| obd.h_c_mon | Heated Catalyst Monitor Status | int | 0:not completed 1:completed | | | |
| obd.e_s_mon | Evaporative System Monitor Status | int | 0:not completed 1:completed | | | |
| obd.s_a_s_mon | Secondary Air System Monitor Status | int | 0:not completed 1:completed | | | |
| obd.a_s_r_mon | A/C System Refrigerant Monitor Status | int | 0:not completed 1:completed | | | |
| obd.e_g_s_mon | Exhaust Gas Sensor Monitor Status | int | 0:not completed 1:completed | | | |
| obd.e_g_s_h_mon | Exhaust Gas Sensor heater Monitor Status | int | 0:not completed 1:completed | | | |
| obd.e_v_s_mon | EGR/VVT System Monitor Status | int | 0:not completed 1:completed | | | |
| obd.c_s_a_s_mon | Cold Start Aid System Monitor Status | int | 0:not completed 1:completed | | | |
| obd.b_p_c_s_mon | Boost Pressure Control System Monitor Status | int | 0:not completed 1:completed | | | |
| obd.dpf_mon | DPF Monitor Status | int | 0:not completed 1:completed | | | |
| obd.n_c_mon | NOx Catalyst Monitor Status | int | 0:not completed 1:completed | | | |

| Parameter Name | Description | Type | Range | Units | Optional | Note |
|----------------------|-------------------------------------|-------|--------------------------------|-------|----------|-------------|
| obd.nmhc_mon | NMHC Catalyst Monitor Status | int | 0:not completed 1:completed | | | |
| obd.o_s_mon | Oxygen Sensor Monitor Status | int | 0:not completed 1:completed | | | |
| obd.o_s_h_mon | Oxygen Sensor heater Monitor Status | int | 0:not completed 1:completed | | | |
| obd.pf_mon | PF Monitor Status | int | 0:not completed 1:completed | | | |
| obd.brake_prim_press | Brake Primary Pressure | float | | kPa | | unavailable |
| obd.brake_sec_press | Brake Secondary Pressure | float | | kPa | | unavailable |

A.5 Cellular Parameters

| Parameter Name | Description | Type | Range | Units | Optional | Note |
|-------------------|---|--------|-------|-------|----------|---|
| modem1.ts | The last time the modem1 info was updated | int | | s | | UNIX timestamp, in seconds since the epoch |
| modem1.active_sim | active SIM card | number | [1,2] | | | 1: SIM1, 2: SIM2 |
| modem1.imei | IMEI code | string | | | | |
| modem1.imsi | IMSI code | string | | | | |
| modem1.iccid | ICCID code | string | | | | |
| modem1.phone_num | phone number | string | | | | |
| modem1.signal_lvl | signal level | number | | asu | | |
| modem1.reg_status | register status | number | [0,6] | | | 0: Not registered, ME is not currently searching an operator to register to. 1: Registered, home network. 2: Not registered, but ME is currently trying to attach or searching an operator to register to. 3: Registration denied. 4: Unknown, e.g. out of LTE coverage. 5: Registered, roaming. |
| modem1.operator | operator | string | | | | |
| modem1.network | network type | number | [0,3] | | | 0: NA, 1: 2G, 2: 3G, 3: 4G |
| modem1.lac | LAC | string | | | | hexadecimal |
| modem1.cell_id | Cell ID | string | | | | hexadecimal |

| Parameter Name | Description | Type | Range | Units | Optional | Note |
|----------------------|--|--------|-------|-------|----------|---|
| modem1.rssi | RSSI(Received Signal Strength Indication) | number | | dBm | | |
| modem1.rsrp | RSRP(Reference Signal Receiving Power) | number | | dBm | | |
| modem1.rsrq | RSRQ(Reference Signal Receiving Quality) | number | | dB | | |
| modem1.sinr | SINR(Signal to Interference plus Noise Ratio) | number | | dB | | |
| cellular1.ts | The last time the cellular1 network info was updated | int | | s | | UNIX timestamp, in seconds since the epoch |
| cellular1.status | cellular1 network status | number | [0,3] | | | 0: destroy 1: create 2: down 3: up |
| cellular1.ip | cellular1 ip address | string | | | | |
| cellular1.netmask | cellular1 netmask | string | | | | |
| cellular1.gateway | cellular1 gateway | string | | | | |
| cellular1.dns1 | cellular1 dns1 | string | | | | |
| cellular1.dns2 | cellular1 dns2 | string | | | | |
| cellular1.up_at | cellular1 connected timestamp | number | | s | | UNIX timestamp, in seconds since the epoch |
| cellular1.down_at | cellular1 disconnected timestamp | number | | s | | UNIX timestamp, in seconds since the epoch |
| cellular1.traffic_ts | The last time the cellular1 traffic info was updated | int | | s | | |
| cellular1.tx_bytes | TX bytes | int | | byte | | |
| cellular1.rx_bytes | RX bytes | int | | byte | | |

A.6 System Parameters

| Parameter Name | Description | Type | Range | Units | Optional | Note |
|----------------------------|---|--------|-------|-------|----------|--|
| sysinfo.ts | The last time the modem1 info was updated | int | | s | | UNIX timestamp, in seconds since the epoch |
| sysinfo.language | language | string | | | | Chinese English |
| sysinfo.hostname | hostname | string | | | | |
| sysinfo.timezone | timezone | string | | | | |
| sysinfo.model_name | model name | string | | | | |
| sysinfo.oem_name | OEM name | string | | | | |
| sysinfo.serial_number | serial number | string | | | | |
| sysinfo.firmware_version | firmware version | string | | | | |
| sysinfo.bootloader_version | bootloader version | string | | | | |
| sysinfo.product_number | product number | string | | | | |
| sysinfo.description | description | string | | | | |
| sysinfo.lan_mac | MAC address of bridge1, is the same with device label | string | | | | |
| sysinfo.wlan_mac | MAC address of 2G WiFi | string | | | | |
| sysinfo.wlan_5g_mac | MAC address of 5G WiFi | string | | | | |

A.7 APP Parameters

| Parameter Name | Description | Type | Range | Units | Optional | Note |
|------------------|---|------|--------------------------------------|-------|----------|------|
| app.wifi_mode_2g | Notify <code>WiFiControl</code> APP to change 2.4G Wi-Fi mode | int | 0:AP 1:STA -1:N/A(status only) | | | |
| app.wifi_mode_5g | Notify <code>WiFiControl</code> APP to change 5G Wi-Fi mode | int | 0:AP 1:STA -1:N/A(status only) | | | |

A.8 1-Wire Parameters

| Parameter Name | Description | Type | Range | Units | Optional | Note |
|-------------------|---|--------|---|-------|----------|------|
| 1-wire.status | The connection state of 1-wire bus | string | "Connected" "Disconnected" | | | |
| 1-wire.type | The type of device on 1-wire bus | string | "Temperature" "ROM Code" "Temperature & ROM Code" | | | |
| 1-wire.temp_num | The number of temperature sensor devices on 1-wire bus | int | [1, 4] | | | |
| 1-wire.rom_num | The number of electronic registration code devices on 1-wire bus | int | [1, 4] | | | |
| 1-wire.tempN_data | The temperature value of one of the temperature sensors on 1-wire bus | float | | °C | | |
| 1-wire.tempN_id | The ID of one of the temperature sensors on 1-wire bus | string | | | | |
| 1-wire.tempN_name | The custom name of one of the temperature sensors on 1-wire bus | string | | | Optional | |
| 1-wire.rom_codeN | The value of one of the electronic registration codes on 1-wire bus | string | | | | |

Note: The letter N in a parameter like "1-wire.tempN_data" and "1-wire.rom_codeN" represents the number of sensors on 1-wire, on a scale of 1 to 4.